



French

COLLECTION

ART & DESIGN EXHIBITION

14-17 OCTOBER 2024

AT

ARTCURIAL



Exhibition scenography

Karim Ceballos
kjs-architecture.com
contact@kjs-architecture.com

Visual identity & catalogue

THE LETTER O.
www.theletter-o.com
contact@theletter-o.com

©Arik Levy



French

COLLECTION

ART & DESIGN EXHIBITION

14-17 OCTOBER 2024

French Collection is an exhibition organized by the French Center of Design showcasing a collection of 100 finest pieces by leading French artists and designers during Paris Art Week.

ARIK LEVY

MAISON LELEU

ATELIER ALAIN ELLOUZ

MAISON PARISIENNE

ATELIERS LISON DE CAUNES

MAISON POUENAT

DUVIVIER CANAPÉS

MAY MAYLIS
ET CHARLES TASSIN

GALERIE

ANNE JACQUEMIN SABLON

STEAVEN RICHARD

GALERIE BSL

THIERRY LEMAIRE

JANAINA MILHEIRO

ZOÉ OUVRIER

ARTCURIAL Auction house - Hôtel Marcel Dassault
7 rond-point des Champs-Élysées, 75008 Paris

French COLLECTION



BIENVENUE À PARIS!
WELCOME TO PARIS!

I am delighted to present the second edition of French Collection in the prestigious setting of the Parisian mansion Hotel Dassault.

The curated selection of 100 pieces made by talented french artists and designers, celebrates both the vibrancy of contemporary French creativity and its deep ties to the rich history of French decorative arts.

A dream collection brought to life that you can experience over 4 days alongside major international events, such as Art Basel and Design Miami.

These events highlight Paris's unrivaled position on the global stage of art and design.

The French Center of Design is honored to be welcomed by Artcurial, a flagship of French auction houses and an iconic location on the Parisian map.

Surrounded by beauty, creative intelligence and inspired by joyful international exchanges, I wish all our guests the very best art week Paris has to offer.

Kira Hosany
French Center of Design Founder | French Collection curator
www.frenchcenterofdesign.com

ARTCURIAL



It is with great pleasure that Artcurial welcomes the French Center of Design from October 14 to 17, coinciding with the opening of Art Basel Paris.

During this period, Artcurial's 20th and 21st Century Art departments will present a carefully curated selection of the finest works of the season, creating a dynamic dialogue with contemporary design. This collaboration with the French Center of Design will highlight the deep connection between modern design and one of Artcurial's core areas of expertise: decorative arts and historical design.

For over two decades, Artcurial has been a strong supporter of both French and international designers, celebrating craftsmanship and artistic excellence from the early 20th century to today. From the iconic works of Art Deco designers and artists to the innovations of contemporary decorators, Artcurial has consistently promoted the best in design innovation and craftsmanship.

United by this shared passion for art, design, and creation, during this special exhibition, the French Center of Design and Artcurial, invites you to discover the dynamic world of contemporary design and decorative arts.

Sabrina Dolla
Artcurial Associate Director | Art Déco-Design
www.artcurial.com

ARIK LEVY



Artist, technician, photographer, designer, video artist, Levy's skills are multi-disciplinary, and his works are shown and installed worldwide. Levy's pieces have been showcased in prestigious galleries and public spaces around the world.

Best known publicly for his sculptures – such as his signature Rock pieces – his installations, limited editions and design, Levy feels “The world is about people, not objects”.

Arik Levy has earned global recognition for his multi-disciplinary work.

After studying industrial design at the Art Center Europe in Switzerland, Levy quickly gained prominence for his innovative approach to design, blending functionality with a deep, artistic expression.

His creations span across furniture, lighting, and large-scale sculptures.

One of his hallmark series, the “Rock” sculptures, showcases abstract forms inspired by nature, challenging conventional perceptions of space and material.



2



1

Photos: ©Arik Levy, ©Ian Sigliuzzi (LoveMeTender) and ©Filip Švácha (Ghost GlassCastBlue)

1.
ARIK LEVY
*BARBED WIRE LOVEMETENDER
BLACK LARGE*
2014. Hand-made brass barbed wire
plated 24 carats gold, black wooden
frame. Edition 1/5.
L77,5 x W77,5 x H6 cm

2.
ARIK LEVY
GLASSBLOCK REFLECTION 38
2021. Mirror-polished bronze cast
and glass. Unique.
L38 x W23 x H23 cm each element

3.
ARIK LEVY
SOLIDLIQUID BRONZE 001
2018. Mirror-polished bronze.
Edition 4/8.
Ø44 cm x H58 cm



3



4.
ARIK LEVY
MICROROCKFORMATION
WOODFIRE & GLASS 75
2023. Formation, mouth-blown
silvered and artistic glass, fired
oakwood. Unique.
L48 x W30 x H76 cm

5.
ARIK LEVY
ROCKFORMATION TOWER 144
2023. Mirror-polished Marine-
Grade stainless steel.
Edition 1/3.
L72 x W64 x H144 cm
©Archive Galerie Scheffel

6.
ARIK LEVY
GHOST 71 GLASSCASTBLUE
2024. Casted blue glass.
L25 x W27 x H62 cm

These pieces reflect his belief in the intrinsic connection between nature and human experience, inviting viewers to engage with their environment on a deeper level. He often incorporates cutting-edge technology alongside traditional craftsmanship, creating pieces that are not only visually stunning but also innovative. His philosophy revolves around the relationship between human emotion, science, and natural environments, allowing his work to transcend mere aesthetics and create a deeper connection with viewers and users alike.

Considering himself now more of a «feeling» artist, Arik Levy continues to contribute substantially to our interior and exterior milieu, his work including public sculpture, as well as complete environments that can be adapted for multi-use. "Life is a system of signs and symbols," he says, "where nothing is quite as it seems."

Levy has received numerous prestigious international accolades for his work and is Chevalier des Arts et des Lettres de la République française.

arik@ariklevy.fr
Studio:
hermeline@ariklevy.fr
Sculpture park:
sculpturepark@ariklevy.fr
www.ariklevy.fr
www.ariklevysculpturepark.com
@arik_levy



7.
ARIK LEVY
STRUCTURE 48
2019. Bronze raw. Unique.
L37 x W36 x H44 cm

ATELIER ALAIN ELLOUZ



By combining meticulous stone craftsmanship with absolute mastery of light, Alain Ellouz stands among France's finest artisans. The exceptional creations the workshop produces are all hand-crafted, and designed with the French luxury standards. A true stone sculptor, Alain Ellouz was the first to reveal the extraordinary richness of alabaster and transform it into jewels transcended by light.

The workshop offers a collection of poetic lighting fixtures with sleek designs that honor the material (alabaster and rock crystal). Today, Alain Ellouz lighting fixtures grace the world's most beautiful interiors. Alain Ellouz also collaborates with artists: lighting fixtures and alabaster panels are engraved or painted, giving birth to limited-edition collectibles.

55 quai des Grands Augustins, 75006 Paris
contact@atelieralainellouz.com
www.atelier-alain-ellouz.com
@atelieralainellouz



1.
ATELIER ALAIN ELLOUZ
VESUVE
2024. Alabaster table in row alabaster
137 x 91 x 37 cm

2.
ATELIER ALAIN ELLOUZ
X ATELIERS DANNEELS & ZAFIRO
TERRA L
2024. Alabaster and burnt-wood floor lamp,
Incandescence collection
36 x 220 x 34 cm



3.
ATELIER ALAIN ELLOUZ
X CAROLINE LEITE
SWALLOW PARADISE
 2023. Caroline Leite's graphite pencil drawing on an alabaster pendant light by Atelier Alain Ellouz
 Ø25 x 35 cm

4.
ATELIER ALAIN ELLOUZ
X CAROLINE LEITE
PARADISE FLYCATCHER
 2023. Drypoint engraved on the alabaster pendant light Celine by Atelier Alain Ellouz
 Ø30 x 20,5cm

5.
ATELIER ALAIN ELLOUZ
X CAROLINE LEITE
DOVE PARADISE
 2023. Black stone drawing on alabaster canvas backlit by Atelier Alain Ellouz
 50 x 70 cm

An illustrator, engraver, photographer and sculptor all at once, Caroline Leite pursues an artistic approach focused on the notions of imprint, legacy and remembrance. Her sculptures of concrete ruin, her photographs and her drawings of plant life and birds are like reminders of the past and of the fragile balance of our worlds. Each one of her pieces tells a story, almost like contemporary cave paintings. Caroline's work with alabaster is almost sculptural, incorporating the volume and vibrant power of each stone piece.

ATELIERS LISON DE CAUNES



After studying at the Union Centrale des Arts Décoratifs, Lison de Caunes devoted herself to the art of straw marquetry, carrying on the tradition of her grandfather, decorator André Groult. Now a specialist in this technique, she rehabilitates these poetic practices by restoring furniture and objects from the 17th century through to the Art Deco period. She has organized several exhibitions, written books on straw marquetry, and taken part

in numerous events to highlight this humble yet luxurious material, which illuminates the most contemporary furniture with its shimmer. She creates commissioned furniture, home accessories, and wall panels for interior designers and architects. Her work is distinguished by its finesse, geometric patterns, and brilliance, making her an essential reference in this field.

ateliers@lisondecaunes.com
@atelierslisondecaunes
www.lisondecaunes.com



1.
**ATELIERS LISON DE CAUNES
ETOILE DE MER**

2024. Straw marquetry jewellery box. Interior lined with velvet goat skin. Marquetry inspired by a wallpaper design by André Groult. Box made by Mævus. Unique and numbered piece.
W34 cm x D24 cm x H12,5 cm

2.
**ATELIERS LISON DE CAUNES
LES ORANGES**

2024. Cigar box in straw marquetry and sipo interior. Humidifier and hygrometer integrated. Marquetry inspired by a wallpaper design by André Groult. Box made by Mævus. Unique and numbered piece.
W34 cm x D24 cm x H12,5 cm

3.
**ATELIERS LISON DE CAUNES
TOTEM**

2022. Artwork in straw marquetry. Unique piece.
52 cm x H255 cm





4



4.
ATELIERS LISON DE CAUNES
STELLA
Mural piece in straw marquetry. Brass frame. Marquetry, inspired by Frank Stella's work. Unique piece.
L150 cm x H150 cm

5.
ATELIERS LISON DE CAUNES
X AGENCE OMBRE
DOUBLE JEU
Nesting table. Fixed central pedestal table, swivel side tables, straw marquetry tabletop, brass feet and frame. Unique piece.
L120-170 x 60-70 cm x H25-35-40 cm



DUVIVIER CANAPÉS

DUVIVIER
CANAPÉS
1840

Handed down from generation to generation since 1840, each Duvivier Canapés creation combines ancestral know-how with the finest high-end materials. Iconic sofas, unique know-how. Duvivier Canapés embodies the refinement of Made by Hand in France furniture, prized for both contemporary and classic interiors. A true signature, the leathers are selected among the finest in the world and the woods are chosen among the most

beautiful essences. Traditional techniques have integrated new technologies and adapted to the production of contemporary luxury products, evident in every detail of the furniture. This expertise has been preserved through generations and honored by the Entreprise du Patrimoine Vivant label, awarded by the French government to the finest workshops. The brand works hand in glove with the best French designers.

27 rue Mazarine, 75006 Paris
ewierzejewski@duviviercanapes.com
@duviviercanapes
www.duviviercanapes.com



1. MICHEL MORTIER SF103

Armchair and ottoman. Limited reedition 103 numbered pieces. Deep green velvet Lelièvre and chromed structure.
Armchair: L94 x W80 x D60 x H95 cm
Ottoman: L68 x W80 x H47 cm

Photos: ©Atelier Arnaud Sabatier (SF103) et ©Didier Delmas (Serge et Émile)

1

Designed in 1954, the SF 103 armchair is an emblematic piece of mid-20th century French design, awarded the Gold Medal at the Milan Triennial the same year. 70 years later, it is experiencing a new life thanks to this limited reissue by Duvivier Canapés, Collection Heritage 2024. This reinterpretation, limited to 103 numbered pieces – a reference to the chair's name – respects the integrity of the original work while adapting it to contemporary demands.

2. GUILLAUME HINFRAY ÉMILE

Armchair and footrest. Camel full grain leather and solid oak.

Armchair: L105 x W73 x H74 cm
Footrest: L65 x W45 x H42 cm

Designed by Guillaume Hinfray, the Emile armchair captures the nostalgia of peaceful summer evenings. Inspired by the famous deckchair, it offers an informal and comfortable indoor seat with generous proportions and a clever rocking mechanism, like a rocking chair. The materials have taken a resolutely luxury attitude: full grain leather doubled with a pure wool-felt for the seat and hand-polished solid oak.

3. PIERRE GONALONS SERGE

Armchair. Black full grain leather and walnut veneered oak

L96 x W79 x H71 cm

"Looking back over the history of the Chesterfield and extracting what still seems contemporary today." This is how Pierre Gonalons defines the creative exercise which brought Serge to fruition. In designing the Serge collection, he wanted to rediscover a certain elegance, that of the optimism and impertinence of Paris in the 1970s. Serge embodies that Parisian chic that can never really be defined but which is always reinventing itself.



2



3

GALERIE ANNE JACQUEMIN SABLON



Founded in 2010 by Anne Jacquemin Sablon, the gallery specializes in contemporary furniture and decorative arts. The coherence of the selection of designers represented by the gallery relies on the balance between minimal design, French style, and the excellence of numerous craftsmanship dedicated to fulfilling the designers' aspirations.

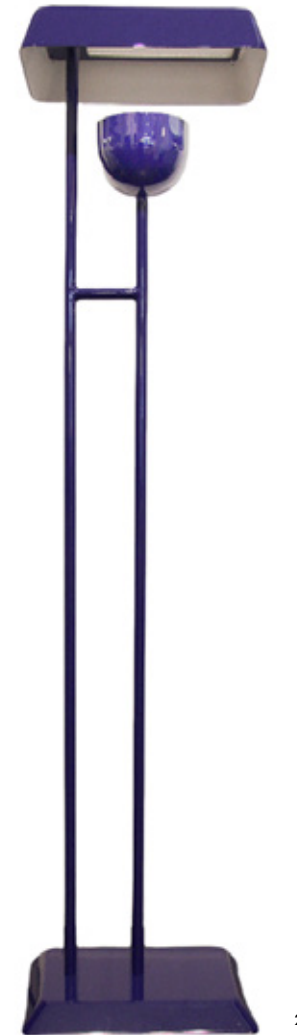
The gallery's collections prioritize noble materials, strong lines, and French craftsmanship by excellent artisans. In 2014, the gallery settled in a former 1920s fashion boutique located

between the Palais-Royal and the Louvre. The gallery offers furniture, lighting, and decorative artworks designed by contemporary artists, both emerging and established. Furthermore, the gallery exclusively publishes furniture and lighting pieces designed by architect Maxime Old. Among the designer's 3,000 drawings, it selects and publishes pieces from the 1950s to the 1980s, never produced during the artist's lifetime.

34 rue Coquillière, 75001 Paris
info@annejacqueminsablon.fr
@annejacqueminsablon
www.annejacqueminsablon.fr



1



2

1.
TRISTAN AUER
LES BAINS
2015. Sofa. Stained beech, velvet, roughgrain.
Designed by Tristan Auer for Hotel Les Bains in Paris, inspired by Andy Warhol's iconic sofa.
L230 x W100 x H80 cm

2.
TRISTAN AUER
TROMBONE
2018. Floor lamp. Lacquered steel, glass, PMMA. The PMMA plates act as diffusers to provide a soft white light on the top.
This floor lamp is available in blue and all RAL colors on request.
W30 x H125 cm



3

3.
WALTER EGON
POGS
Pedestal table in pure iron.
Handcrafted by a compagnon du devoir. This welded and bent piece features facets whose geometry is accentuated by two contrasting finishes: a mirror-polished part and a part with a black forge patina. The use of pure iron ensures that this unique piece will continue to oxidize over time, without becoming too distinctive.
48 x H43 cm



4



5



6

4.
ATELIER GEORGE
SOLAIRE PENDANT LIGHT
 2020. Blown glass, brass. This pendant light was conceptualized by Atelier George in 2020, and is part of the Aube collection. Each sphere is blown by the artist, making the suspension unique. This luminaire is composed of an opaline white glass globe veined with amber, and three colored glass planets veined in shades of blue, gray and ochre, linked by brass arches.
 L100 x W25 x H86 (min.76) cm

5.
ANTONIN ANZIL
UNTITLED, SÉRIE AESTUS
 2024. Bas relief with frame. Heavyweight Gmund Power Blue cotton paper. Its large size and the use of blue paper makes it an exceptional piece in the artist's production.
 W74 x H104 cm

6.
MAXIME OLD
HÉLICE
 1961(Edition 2012). Coffee table designed for Paquebot France in 1961, the Hélice coffee table features the dynamic motif of a ship's propeller. Edition 2012. Available in diameters of 110 or 95 cm.
 Ø110cm x H49 cm



7.
CLAIRE COSNEFROY
LARGE VASE
 2024. Hand-laid white chamotte stoneware. Unique piece signed by the artist. Its cloudy, tactile and raw appearance lends this sculptural vase great tenderness.
 W35 x H45 cm

GALERIE BSL

Founded in Paris by Béatrice Saint-Laurent, Galerie BSL has been dedicated to exploring the boundaries between art, sculpture, and design since 2010, opening new horizons in object creation. Its mission is to challenge conventions and engage the imagination through bold artistic research.

Emphasis is placed on the sensory value of the work and its ability to evoke a sense of surprise, wonder, and even enchantment. Craftsmanship is challenged and materials are renewed to introduce the unexpected at the heart of

functionality. On the contemporary art and collectible design scene, Galerie BSL stands out for its avant-garde editorial line, significant international collaborations, and commitment to breaking down the boundaries between disciplines, practices, and usages. In relation to its functional art pieces, the gallery presents a curated selection of sculptures, paintings, tapestries, and photographs, thus continuing to forge its own language while enriching the dialogue between the works.

14 rue des Beaux Arts, 75006 Paris
 info@galeriebsl.com
 @galerie_bsl
 www.galeriebsl.com



1

1.
CHARLES KALPAKIAN
MOON I-D
 2015. Armchair. Ebonized beech, Kvadrat upholstery. Limited edition of 10 + 2 A.
 H115 x L80 x W80 cm

2.
FRANÇOIS MASCARELLO
DYNAMIC STOOL I, II & III
 Stools. Mineral composite. Limited edition of 8.
 H45.5 x L39 x W38 cm



2



3

3.
VIRGINIE MORIETTE
HUMANIS #3
 2023. Table light. Oxidized bronze, brass in brushed satin finish, coral orange lacquered stainless steel, LEDs. Limited edition of 8.
 H24.8 x L18.1 x W6.4 in.

4.
ISABELLE STANISLAS
ELLIPSE
 2019. Coffee table. Bronze-colored patinated brass, black Marquina marble, white Estremoz marble. Limited edition of 8 + 4 AP.
 H36 x Ø130 cm

5.
MARLÈNE MOCQUET
LE COQ EN FUITE
 2024. Mixed media on cotton canvas.
 H65 x L81 cm

6.
CHARLOTTE CORNATON
CHAKRAS
 2012-2013. Sculptures. Enamelled ceramic.
 H36 - 50 - 80 x L20 x W20 cm



5



6



4



7



8

7.
FRANÇOIS MASCARELLO
WILD SILK 22.26
2022. Raw silk cut and handsewn with invisible stitches on white linen.
Unique piece.
H100 x L100 x P2,5 cm

8.
FRANÇOIS MASCARELLO
WILD SILK 22.19
2022. Raw silk cut and handsewn with invisible stitches on white linen.
Unique piece.
H130 x L89 x P3,5 cm

9.
FRANÇOIS MASCARELLO
WILD SILK 22.21
2022. Raw silk cut and handsewn with invisible stitches on white linen.
Unique piece.
H162 x L130 x P2.5 cm



9

JANAINA MILHEIRO

ATELIER
JANAÍNA MILHEIRO
TEXTILE & PLUME

Janaina Milheiro is a Franco-Brazilian artist and textile designer, she specializes in the creation of works and motifs from feathers. A graduate of École Duperré in Paris, she founded her studio in 2011, where she develops unique pieces combining craftsmanship and innovation. In her studio workshop in the heart of Paris, Janaina Milheiro and her team create and produce one-off pieces and small

series out of bird feathers for art lovers and luxury professionals. Her meticulous, poetic compositions are used in haute couture and for luxury houses such as Dior, Givenchy, Guerlain, and Valentino. Her creations, at the crossroads of traditional craftsmanship and contemporary design, draw their inspiration from nature and movement. They offer singular and highly innovative featherwork of the highest quality.

3 rue Saint-Gilles, 75003 Paris
janainamilheiro@hotmail.com
@janainamilheiro
www.janaina-milheiro.com



3



1



4



1.
JANAINA MILHEIRO
CLAM

Wall art composed of multiple turkey and goose feathers finely cut by hand. A bas-relief work inspired by nautical plants.
W140 x H210 x D4 cm

©JanainaMilheiro



2

2.
JANAINA MILHEIRO
VOLARE 3

Shown in mirrored laminated glass, hand cut yellow turkey & goose feathers, gold foiled feathers, brass frame.
Ø100cm x T3,6 cm

3.
JANAINA MILHEIRO
VOLARE 5

Shown in mirrored laminated glass, hand cut celadon green turkey & goose feathers, gold foiled feathers
Ø70cm x T3,6 cm

4.
JANAINA MILHEIRO
VOLARE 1

2019. Shown in mirrored laminated glass, hand cut white and yellow turkey & goose feathers, gold foiled feathers
Ø140cm x T(thickness) 7cm

MAISON LELEU



For over 100 years, Maison Leleu has combined art, luxury, and craftsmanship through the rigor of its design and the quality of its expertise in the exploration of precious materials. As heirlooms, Leleu editions are considered true works of art and are sought after by gallery owners, museums, and clients the world over. A graduate of the École Boule, Alexia Leleu,

great-granddaughter of founder Jules, continues the family tradition, opening up a dialogue between heritage and modernity. Today driven by the creative vision of Alexia, Maison Leleu offers bespoke editions of furniture, lighting and rugs, finely tuned to the requirements of interior designers.

contact@maisonleleu.fr
@maisonleleu
www.maisonleleu.com



2



4



1



3

1.
**MAISON LELEU
ANTOINE**

Wood, leather, stainless steel and brass. This desk is inspired by LELEU's passion for aviation. Its taut lines offer an apparent simplicity, like a perfect definition of Mies van der Rohe's «less is more». Airy, it's an invitation to travel.
Custom-made furniture.

2.
**MAISON LELEU
OLIVIA**

Meurisien and velvet. One of Maison LELEU's greatest successes, the

Olivia chair has finely angled legs and a back finished with a small wave. More than 100 years after the company's creation, it continues to be part of the collections in a timeless and indefectible way.
Custom-made furniture.

3.
**MAISON LELEU
MAVA**

Resolutely decorative, this hybrid Lacquer and velvet. Resolutely decorative, this hybrid model between stool and armchair is equally at home in a hallway, entrance hall, bedroom or living

room. Its singular design makes it a real eye-catcher. This armchair entered the private collections of the Mobilier National (French institution) in 2021.
Custom-made furniture.

4.
**MAISON LELEU
JULIETTE**

Crystal and brass. The Floor Lamp Juliette seduces with her graceful, noble silhouette. Its light, added to its shiny metals, creates an abundance of sparkling points for a unique, precious atmosphere.



5



6



8



7

5. **MAISON LELEU**
VERTIGO

Brass gunmetal finish in leather and velvet. The Vertigo armchair was designed to be placed under the stars in the sumptuous dining room of the liner "France". Designed in the 60s, Vertigo succeeds in being both modern and timeless, and emblematic of French art de vivre.

6. **MAISON LELEU**
PAULETTE

Marble, brass and fabric. This classic table lamp features a scrolled metal structure resting on a stepped rectangular base. Marble and gold, precious and luminous materials combined, give this lamp all its brightness.

7. **MAISON LELEU**
WALL TAPESTRY

Paule Leleu created almost five hundred designs throughout her career, including for decorative tapestries. Abstract design Collection.

8. **MAISON LELEU**
PANTER

Crystal and brass. The Floor Lamp Juliette seduces with her graceful, noble silhouette. Its light, added to its shiny metals, creates an abundance of sparkling points for a unique, precious atmosphere.

9. **MAISON LELEU**
JOYA

Hand-knotted rug, 100% New Zealand wool. The Joya rug was created in the 1940's. Numbered and signed from 1 to 8. Made in France.



MAISON PARISIENNE



Founded in 2008 by Florence Guillier Bernard, the Maison Parisienne gallery promotes artists who use material and who have exceptional French know-how. Maison Parisienne's collections include one-off and limited-edition pieces, as well as commissioned creations, such as works by Simone Pheulpin, Pierre Renart and Gérald Vatrín, which feature in the permanent collections of the MAD-Musée des Arts Décoratifs in Paris,

the Mobilier National and the Victoria and Albert Museum in London. A nomadic gallery, Maison Parisienne has organized over 70 exhibitions in London, Brussels, Monaco, and Geneva since its creation.

contact@maisonparisienne.fr
@maisonparisiennegallery
www.maisonparisienne.fr



1.
MARC RAIMBAULT
A FLEUR DE PEAU
Bench. Macassar ebony, brass-plated metal, iron and gold dust.
L190 x W30 x H45 cm



2



3



4

2.
HERVÉ WAHLEN
RELIEF III
2023. Console. Hammered brass, bronze patina, white gold gilding.
W119 x D21 x H28,5 cm

3.
PIERRE RENART
GENESE
2022. Armchair. American walnut and leather.
W 60 x D54 x H78 cm.

4.
SIMONE PHEULPIN
FAILLE VI (détail)
Mural. Cotton folds, pins and oak frame.
W31x H66 cm



5



6

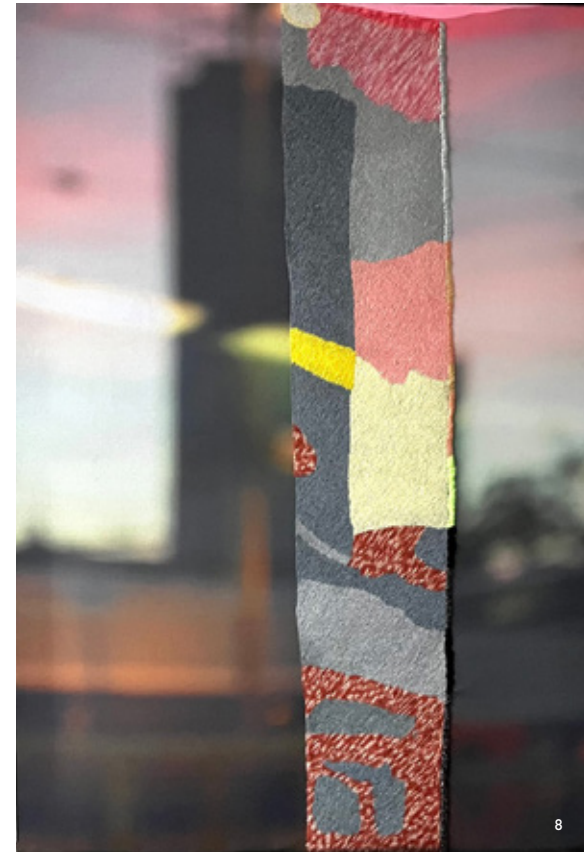


7

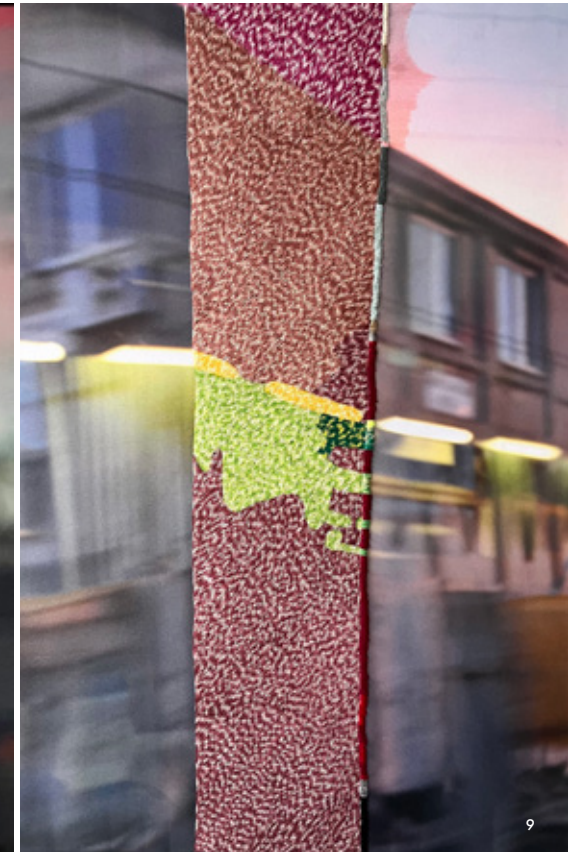
5.
GÉRALD VATRIN
AU DELÀ DU VIDE
2024. Hand-blown violet glass with frosting effects, one woven leather passage in ivory colour, polished stainless steel base. Unique piece.
W40 x D19 x H39,5 cm

6.
GÉRALD VATRIN
TIGRE NOIR ET BLANC
2024. Hand blown glass, alabaster colour, black enamel, chiselled polished stainless steel base. Unique piece.
W37 x D36 x H19 cm.

7.
HERVÉ WAHLEN
GRANDE TORSION OR BLANC
2022. Sculpture. Brass, bronzed patina, white gold leaf, LED.
D38 x W30 x H28,5cm



8



9



10

8.
AURÉLIE MATHIGOT
ATTENTE DU JOUR
2024. Photograph printed on canvas, embroidered with thread. Unique piece.
H130 x W90 cm

9.
AURÉLIE MATHIGOT
DÉPART AU PETIT MATIN
2024. Photograph printed on canvas, embroidered with thread. Unique piece.
W90 x H130 cm

10.
AURÉLIE MATHIGOT
LUMIÈRE SUR LE DÉPART
2024. Photograph printed on canvas, embroidered with thread. Unique piece.
W90 x H130 cm

MAISON POUENAT



Founded in 1880 in France, Maison Pouenat transforms metal into inspiring, contemporary artistic creations with rich forms and innovative finishes. The workshop uses both traditional ironwork techniques and innovative processes in order to offer the finishes, materials and assemblies that will create the furniture and architecture of tomorrow. More than a hundred finishes are intended to enhance the furniture and interiors of the most prestigious places. Steel, bronze, aluminium, brass, copper and stainless steel can be paired with high-quality

materials such as wood, marble, plaster, and glass. The excellence and rarity of Pouenat's knowledge have been confirmed by the French government award – "Living Heritage Company".

Pouenat is known on the international scene for its furniture and lighting editions. Every year, a new collection is made in collaboration with a renowned French designer. The catalog also contains capsule collections and exceptional pieces, made in collaboration with international artists.

22 bis passage Dauphine, 75006 Paris
 gallery@pouenat.com
 www.pouenat.fr
 @pouenat.official

Photos: ©Jean-Pierre Vaillancourt et ©Sylvain Claire (Posa Chair)



1



2



3



4



5



6

1. **JULIEN SCARBONCHI**
CAPO
 Side table. Base, top in oxidized polished brass, shiny varnish and in varnished brush ash-tree.
 L56 x W54 x H55 cm
2. **THOMAS BOOG**
PINECONE
 Stool-Pedestal table. Shiny and matte white nickel-plated brass.
 Ø50 x 48 cm
3. **RODOLPHE PARENTE**
GLORY
 Polished stainless steel console. Gunmetal patinated steel. Satin varnish.
 L150 X W40 X H90 cm

4. **FRANÇOIS**
CHAMPSAUR
LINE
 Folding screen. Sanded aluminum + satin varnish. Limited edition of 12 pieces.
 W120 x H200 cm
5. **JULIEN SCARBONCHI**
POSA
 Chair. Base, seat and back in oxidized or aged aluminium, shiny champagne varnish.
 Option: Seat and back pad in ash-tree brush anthracite tinted or varnished brush.
 Ø39/53 x W 44/48 x H45/84 cm
6. **HUMBERT & POYET**
SORBET
 Table lamp in «Turquoise» hot patinated bass. Matte and shiny varnish. Limited edition of 12 pieces.
 Ø41 x 79 cm

MAY MAYLIS ET CHARLES TASSIN

MAY
MAYLIS ET CHARLES TASSIN

Maylis and Charles Tassin met in 2008. Charles, an interior designer, has worked with some of France's most prestigious craftsmen. Maylis, on the other hand, was a painter, before moving into the decorative arts. When they opened Galerie MAY in 2012, Maylis and Charles together drew their inspiration from creations from the 1940s to the 70s, inspired by a shared cinematic, musical, and decorative universe.

Their work rejects minimalism, each of their pieces exhibiting an opulence assumed in its attention to detail, blended with neo-classical rigor. These "antiques of the future" are part of a French arts and crafts tradition, and stand out both as decorative furniture and collector's items.

23 & 34 rue de Lille, 75007 Paris
sophie@galerie-may.fr
@maylis.et.charles.tassin
www.galerie-may.fr



1.
MAYLIS ET CHARLES TASSIN
DORR
Mirror in bronze.
W76 cm x H112 cm



2.
MAYLIS ET CHARLES TASSIN
VORR
The VORR floor Lamp, a bronze and gold leaf sculpture, is a tribute to the character of Winslow in Brian de Palma's film, Phantom of the Paradise. Patinated bronze base and globe's inside with goldleaf.
L40 x W90x H170 cm



3.
MAYLIS ET CHARLES TASSIN
TESS
Armchair. From architectural inspiration, its nested shapes and the purity of its curves make TESS an invitation to let ourselves rest in a sensual and visual comfort. Velvet upholstery.
L65 x W101 x H88 x Seat Height 40 cm

4.
MAYLIS ET CHARLES TASSIN
MOORR
Side Table inspired by Henry Moore
and his sculptures. The two shapes of
the MOORR intertwine in a controlled
chaos. Bronze base and marble top.
L64 x W64 x H65 cm



5



6



7

5.
MAYLIS ET CHARLES TASSIN
CYRR
Table lamp. Enameled ceramic with
silk lyre assembly lampshade.
L29 x W31,5 x H88 cm,
lamp base 49 cm

6.
MAYLIS ET CHARLES TASSIN
REGG
All in curves, the REGG sofa
extends its wings, it refers to the
40's sofas. Upholstery.
L280 x W100 x H72
x Seat Height 40 cm

7.
MAYLIS ET CHARLES TASSIN
TRIPLL
With both mineral and vegetal
appearances, the TRIPLL Coffee
Table is a trio whose shapes
embrace themselves without ever
touching. Metallization on wood.
L200 x W85 x H35/42/52 cm

STEAVEN RICHARD



Renowned for his exceptional craftsmanship and artistic approach to metal, Steaven Richard founded his workshop in 2001.

Although his roots lie in traditional wrought ironwork, he has freed himself to innovate. Steaven is passionate about creating new textures and patinas to make furniture, as well as wall panels. Empowered with exceptional technical prowess, he is constantly

experimenting to discover new horizons. His aesthetic research has led him to develop a know-how that is unique in the world: artistic lamination, a patented process that transforms metal into a textured surface. This innovation has earned him prestigious collaborations with brands such as Chanel, Cartier, and luxury hotels. He notably made metal flooring for Karl Lagerfeld.

atelier@steavenrichard.com
@ateliersteavenrichard
www.steavenrichard.fr



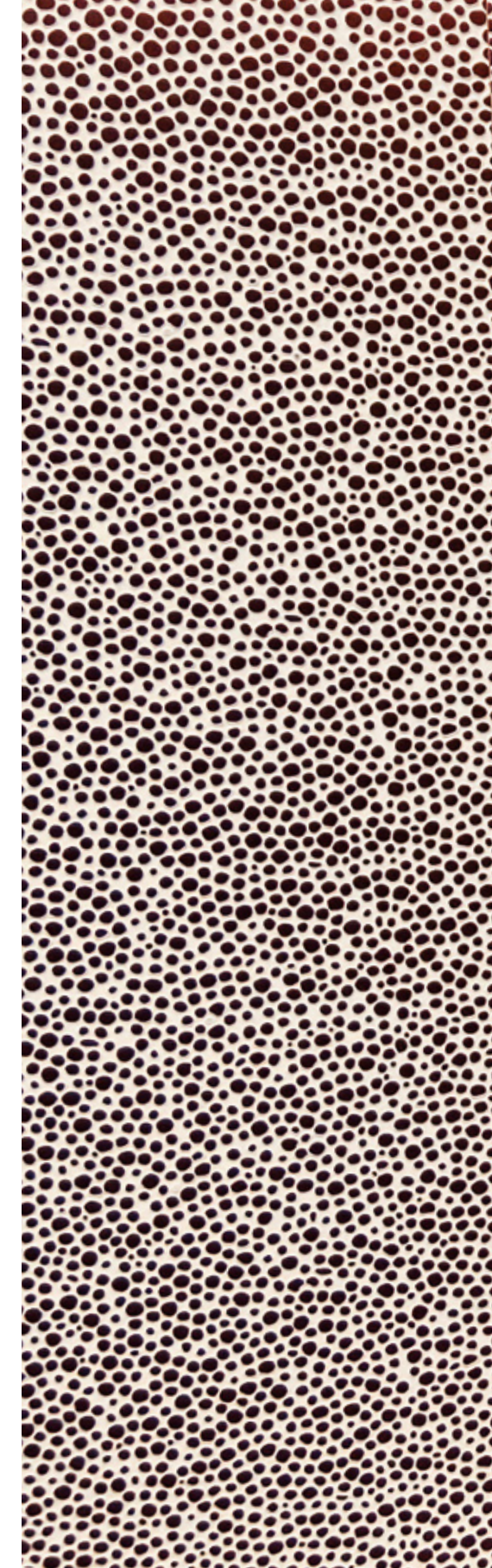
1.
ATELIER STEAVEN RICHARD
SARAH

2024. Wrapped in copper sideboard. The metal is textured like shagreen and patinated with red bronze on a white background.

L162,4 x W47,4 x H71 cm



2.
ATELIER STEAVEN RICHARD
2024. Pendant light. Copper lamp,
textured shagreen and patinated in white.
Ø60 x H17,1 cm



THIERRY LEMAIRE



Architect, interior designer, aesthete. For the past twenty years, Thierry Lemaire has successfully achieved the remodeling of deluxe apartments and private houses, lending his strong and identifiable signature to both. A connoisseur of 20th and 21st-century Decorative Arts, and an inquisitive talent scout, his eponymous gallery in Paris opened in 2017 to showcase his made-to-measure furniture alongside the work of various artists,

all harmoniously integrated within his unique aesthetic. As a great feather in the cap of the practice, Thierry Lemaire was honored with the project of refurbishing the reception salons of the Elysée Palace, and with making the desk of Monsieur le Président Emmanuel Macron.

11 rue Bonaparte, 75006 Paris
sales@thierry-lemaire.fr
@thierrylemaire_
www.thierry-lemaire.fr

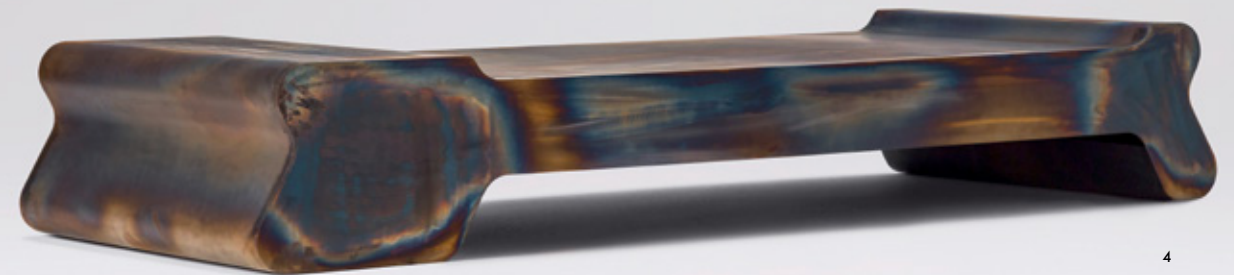


3



1

2



4

1.
**THIERRY LEMAIRE
KOSIS**
Table Lamp. Arabescato marble
W50 x D30 x H116/130/142 cm

2.
**THIERRY LEMAIRE
KAALA**
Armchair. Patinated steel,
seating and back cushion
upholstered in fabric
L118.5 x W78 x H50 cm

3.
**THIERRY LEMAIRE
VEZZA**
Side tables. Fractal Resin.
Ø35 x H55 cm

4.
**THIERRY LEMAIRE
KAALA**
Coffee table. Patinated steel
L200 x W80 x H32 cm

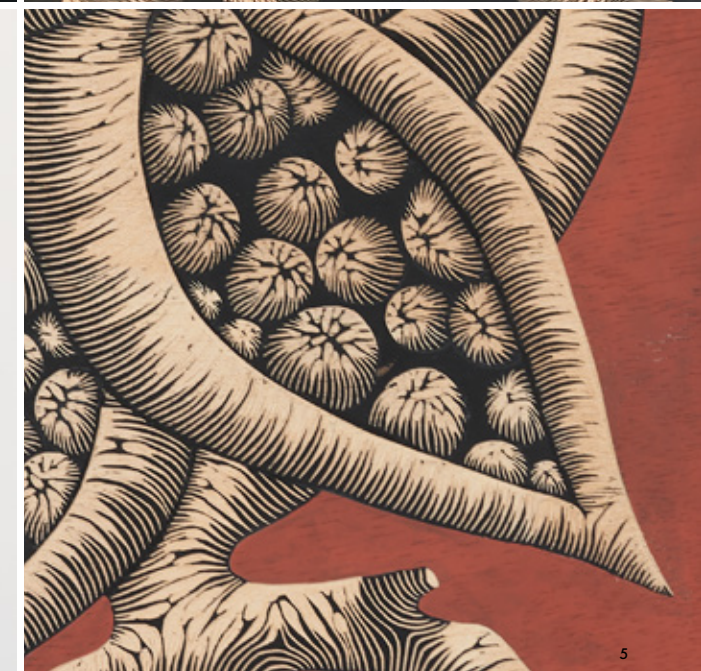
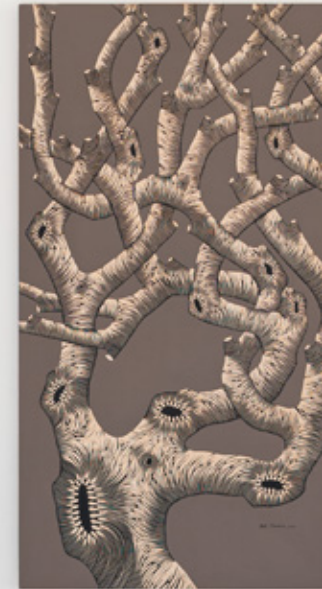
ZOÉ OUVRIER

Born in 1975, Zoé Ouvrier lives and works in Saint Paul-de-Vence. As soon as she graduated from the Ecole des Beaux-Arts in 2002, the press enabled her to gain international recognition. Zoé Ouvrier uses the technique of engraving to give back to plywood its new nature of wood. She combines this technique with those of painting and drawing. The imprinted bark evokes the textures of skin and life, representing the original matrix where the forest and humanity converge. Her body

of work invites us to explore and engage with the interplay between nature and texture in a three-dimensional context.

For more than 20 years, Zoé Ouvrier has denounced the imbalance of the human impact and its uprooting. All her work revolves around this sensitivity and a possible opening towards freedom. Her creations are regularly exhibited internationally and are highly prized in the world of high-end decoration.

zoe@zoeouvrier.com
@zoeouvrier
www.zoeouvrier.com



1.
ZOE OUVRIER
ECLIPSE
2018. Wood sculpture, acrylic, oil paint & Obsidian storm.
Ø100 cm

2.
ZOE OUVRIER
SCREEN METAL FOREST 2
Wood sculpture, acrylic paint, gold leaf & liquid bronze.
W250 x H230 cm

3.
ZOE OUVRIER
ENZA
2020. Wood sculpture & acrylic paint.
W90 x H110 cm

4.
ZOE OUVRIER
SUSIE BROWN
2021. Wood sculpture & acrylic paint.
W65 X H120 cm

5.
ZOE OUVRIER
FAYOLA (CHANCE)
2023. Wood sculpture & acrylic paint.
W49,5 cm x H70 cm

DESIGN & ART SPOTS

- CURRENT FAIRS
- ◆ MUSEUMS & EXHIBITIONS

French
COLLECTION
14-17 OCTOBER 2024
ARTCURIAL



TALK
OCTOBER 15, 2024
3:00 PM, ARTCURIAL



ARIK LEVY

AT FRENCH COLLECTION

We are honored to have Arik Levy joining French Collection, where he will not only present his work but also host an insightful talk. This exclusive opportunity allows you to hear from one of the foremost voices in contemporary art, delving into his creative process, his inspirations and his take on the evolving world.

In addition to his talk, several of Levy's celebrated pieces will be exhibited throughout the showcase, offering attendees a rare chance to experience his work up close. Expect to see some of his signature designs that highlight his unique style.

- ◆ CHÂTEAU DE VERSAILLES
- ◆ FONDATION LOUIS VUITTON
- ◆ CITÉ DE L'ARCHITECTURE
- ◆ MUSÉE DU QUAI BRANLY
- ◆ MUSÉE D'ART MODERNE
- ◆ PALAIS DE TOKYO
- ◆ MUSÉE YVES SAINT LAURENT
- ◆ MUSÉE JACQUEMART-ANDRÉ
- ◆ HÔTEL DE LA MARINE
- ◆ MUSÉE DES ARTS DÉCORATIFS
- ◆ MUSÉE D'ORSAY
- ◆ LOUVRE
- ◆ COLLECTION PINAULT BOURSE DE COMMERCE
- ◆ CENTRE POMPIDOU
- ◆ MUSÉE CARNAVALET
- ◆ FONDATION CARTIER

Art|Basel
16-20 OCTOBER 2024

Design/Miami
Paris
15-20 OCTOBER 2024

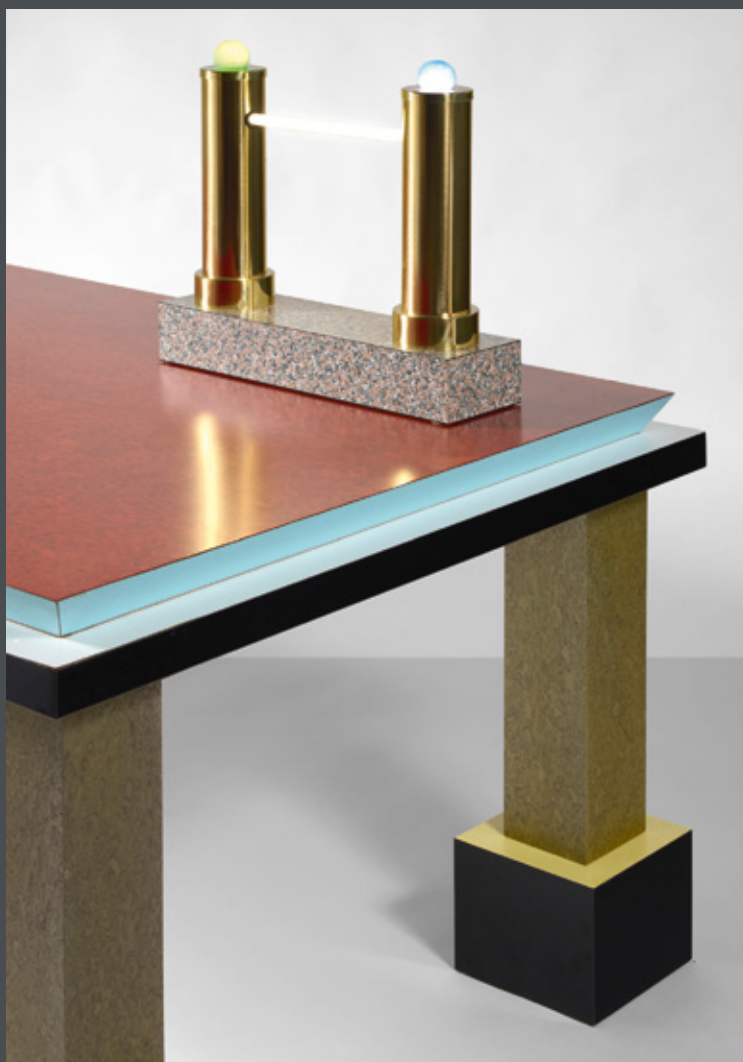
ASIA NOW
Paris Asian Art Fair
17-20 OCTOBER 2024



Find out all details on our website
www.frenchcenterofdesign.com

sweet dreams

DESIGN FROM THE 80'S



auktion
18th october 2024
2pm

exhibition
from monday 14th
to friday 17th october

7 rond-point
des Champs-Élysées Marcel Dassault
75008 Paris

Browse
the catalogue



Contact
Sabrina Dolla
+33 (0)1 42 99 16 40
sdolla@artcurial.com

ARTCURIAL

FRENCH
CENTER
of DESIGN

DISCOVER

The French Center of Design invites you to discover the full richness of France's cultural heritage through exclusive experiences. Whether in Paris, the French Riviera or throughout France, we provide privileged access to the very best of French art and design.

Architectural gems, private artist studios, hidden galleries, exquisite culinary experiences... The French art of living is a rich, immersive experience, and our expertise helps you embrace it fully.

CONNECT

The French Center of Design bridges the worlds of art and design, promoting France's role on the international stage.

Through events, exhibitions and meaningful encounters, we foster human connections and ensure that design professionals and enthusiasts from around the world come together.

SUPPORT

The French Center of Design supports international interior designers and collectors in France. With over 12 years of expertise in the French market, we have assisted more than 300 international professionals with their work in France. Whether you need help finding the right manufacturer for your project, staying up-to-date with French trade shows, or organizing a personalized tour experience, we are here to provide expert advice and insider insights.

WWW.FRENCHCENTEROFDESIGN.COM

@FRENCHCENTEROFDESIGN



French
COLLECTION



WWW.FRENCHCENTEROFDESIGN.COM

@FRENCHCENTEROFDESIGN